

FITTER ASSIGNMENT AND EMERGENCY MANAGEMENT PLAN

FITTING BY THE EXHIBITOR

DECLARATION FOR THE VERIFICATION OF TECHNICAL AND PROFESSIONAL SUITABILITY UNDER ARTICLE 47 D.P.R. 445/2000

The EXHIBITOR _____ aware of the existence of criminal responsibility under art. 76 of D.P.R. ri. 445/2000 and subsequent modifications and integrations, incurred by whoever signs false declarations and the relevant penalties, under art. 47 of D.P.R. 28 i 445 and subsequent modifications and integrations.

DECLARE:

- ☒ that they have received the following documentation: "Regulations" for the "REAS International Exhibition for Rescue, Fire Fighting, Disaster Relief and Security" on 3 - 4 - 5 October 2025, containing the general terms on safety and the information under art. 26 of Legislative Decree 81/08, on the specific risks present in the workplace, on the preventive measures and emergency measures adopted and the DUVRI - Unified text on assessment of risks generated by interference, on the reverse of this communication, together with the Emergency management plan;
- ☒ they possess all the technical and professional requirements laid down in articles 14, 26 and 29 and in annex XVII of Leg. Dec. 81/08 and subsequent modifications and integrations and D. l. 22/07/2014;
- ☒ to avoid violations of worker health and safety regulations, as well as in the case of irregular work, which result in the suspension of business activity by the National Labor Inspectorate, pursuant to art. 14, Annex XVII of Legislative Decree 81/08 and subsequent amendments and additions and of the Ministerial Decree 22/07/2014;
- ☒ to set up and dismantle their exhibition space as part of the "REAS International Exhibition for Rescue, Fire Fighting, Disaster Relief and Security" on 3 - 4 - 5 October 2025;

AND COMMUNICATES

that the person in charge of the set-up and dismantling work at Centro Fiera Montichiari (BS) is

Mr. / Mrs. _____ mob. _____

together with the following collaborators:

Name	Surname	INPS position	INAIL position

Date

Stamp and legible signature (EXHIBITOR)

X



INFORMATION, UNDER ART. 26 LEG. DEC. 81/08 ON SPECIFIC RISKS AND ON MEASURES OF PREVENTION, PROTECTION AND EMERGENCY AND DUVRI

Centro Fiera S.p.A., based in Montichiari (BS), via Brescia 129, mutually acknowledges, for the purposes of fulfilling the requirements of art. 26 Legislative Decree 81/08, to the following:

1. Risk of fire

Since the activity is subject to a specific fire risk due to the presence of cardboard and plastic and wooden panels, it is prescribed not to smoke and not to use naked flames, to have suitable extinguishing means, not to store combustible materials.

Before using naked flames (welders or flexible grinders, etc.) it is necessary to follow the specific company procedure and obtain authorization from the company manager. It is forbidden to use LPG gas cylinders. On display it is necessary to leave machinery or vehicles with fuel in minimum quantities. Each exhibitor must install in the stand in a clearly visible and accessible position, regularly marked, a portable fire extinguisher of 6 kg. of at least class 34A 144BC, every 50 m². It is forbidden to leave machinery or vehicles on display with a full tank of fuel and the battery connected.

2. Risk of explosion

The presence of methane boilers, the methane distribution network, disinfection equipment powered by petrol engines, parked vehicles and petrol tanks (in the storage area) requires that open flames not be used in the areas concerned and that vehicles not be parked near the heating plants.

3. Exposure to harmful substances

For work carried out in the area where the disinfection equipment is located, use a mask with a specific filter. Do not use open flames.

4. Electrical risk

Ask for authorization from company officials before connecting to sockets and create and/or verify the correct coordination between the earthing system and the protection device.

Do not leave cables on the ground that could cause danger to workers and visitors. Electrical systems must be considered permanently live even in the event of a temporary interruption of the electricity supply. All components used must have the CE mark. The exhibitor will ensure the obligation of design and declaration of conformity in accordance with Ministerial Decree 37/08. The power supply of mobile devices powered by a flexible cable must have the minimum flexible length. The maneuvering and protection devices must be placed in a place available exclusively to the personnel in charge, easily accessible and inspectable and free of any clutter. All users, except those with double insulation, all sockets and all metal structures must be earthed in compliance with the rules of the art. Lighting devices must be resistant to flame and ignition, according to CEI standards. They must be mounted at a sufficient distance so as not to create overheating on exposed surfaces (CEI 64-8), firmly fixed, without stressing the power cable and protected against accidental falling or collapse of the support. The lamps must be out of reach and installed at a height of at least 250 cm from the floor. It is forbidden to leave the electricity supply of the stands switched on during the closing hours of the fairground. Interventions on electrical systems

must be carried out in compliance with the CEI 11-27 standard. In the case of interventions on electrical systems of Centro Fiera SPA, the Employer of the contracting company assumes the delegation from the owner of Centro Fiera SPA, of being responsible for the system in accordance with the CEI 11-27 standard. If it is necessary for some equipment to maintain the voltage, it must have a specific dedicated electrical circuit.

5. Risk of severe falls

Non-standard setups must be authorized by Centro Fiera and be provided with a project stamped and signed by a qualified technician and with the relevant technical documentation. For the use of prefabricated structures, scaffolding, scaffolding, etc., full compliance with safety regulations must be guaranteed. Delimit the work area, use bags and suitable containment equipment for commonly used tools. Secure electrical panels located high up with a double locking system to prevent the risk of falling. It is forbidden to leave dangerous vehicles or equipment unattended.

6. Investment risk

Forklifts, aerial platforms, cranes and motor vehicles must be used by authorised persons who are adequately trained in the use of the vehicles, the routes and the risks associated with the operations. Forklifts must always move with the forks lowered, in delimited areas, and signalling their presence by honking the horn. Delimit the work area of any construction vehicles and cranes, avoiding any possible interference. Respect the internal traffic rules and the relevant vertical and horizontal road safety signs. Do not exceed a speed of 5 km/h on internal roads. Ensure that the personnel operating the vehicles wear suitable PPE with high-visibility jackets. All vehicles must stop with the parking brake engaged. No person, for any reason, must approach within the operating radius of the vehicles. Honk the horn when the entrance gates to the pavilions pass. Use the vehicle entrances and not the pedestrian ones, installing the relevant signs.

7. Exposure to noise

In some stand preparation activities, in pavilions, when using flexible grinders and rotary percussion drills, it is necessary to use hearing protectors if the noise emission level exceeds 85 dB (A).

8. Emergency

In case of emergency, follow the instructions provided in the relevant plan or the indications as per the layout displayed in the pavilions and the indications of the company managers. In order to ensure immediate and easy evacuation, the personnel of the exhibiting companies and their possible subcontractors will view the exit routes present in the vicinity of the assigned work position.

9. Use of cranes and work vehicles

Lifting equipment with a capacity greater than 200 kg must comply with the periodic checks carried out by the supervisory bodies, ropes and chains must be checked every 3 months and must be CE marked. Their use is limited to the assigned area, delimiting the

area concerned and preventing access by outsiders. Do not enter the work area of cranes and construction equipment without first stopping and blocking them and receiving authorization from the person in charge of the Exhibition Center.

10. Use of vehicles for loading and unloading

Access to the exhibition centre is permitted only to authorised persons. The driver of the vehicle entering for loading and unloading operations must contact the staff of the Exhibition Centre and wait for instructions on his/her vehicle. Access must be through the authorised driveways. Parking of vehicles will be permitted only in the designated spaces and no later than closing time. Unloading and parking of containers or detachable parts of vehicles is not permitted. It is forbidden to drive through pedestrian areas. In the event of prolonged parking, it is mandatory to turn off the engine. It is forbidden to obstruct exit routes or emergency vehicles. It is forbidden to access the interior of the pavilions with motor vehicles without prior authorisation; access to internal combustion engines is not permitted; access to the interior of the pavilions for loading and unloading operations may be authorised for vehicles equipped with a catalytic converter, which must immediately turn off the engine during loading and unloading operations. The speed of 5 km/h (walking pace) cannot be exceeded within the enclosure. The internal transit and approach of the truck to the loading and unloading areas must be carried out at very low speed, after having checked that there are no objects. No people must pass through the maneuvering area; if there is this danger, a person on the ground must be guaranteed to be in visual and auditory contact with the driver. Once the maneuver is complete, stop the vehicle with first gear engaged, pull the parking brake and, if necessary, block the wheels with a wedge. The person giving maneuvering instructions to the drivers must wear a high-visibility jacket and maintain visual and verbal contact with the driver who must keep the window open; make sure that no one is behind the vehicle; before giving the reverse signal, stand slightly staggered with respect to the vehicle; do not stand in the vehicle's maneuvering area. Suppliers/transporters who access the exhibition center to deliver material on behalf of the exhibitor must be in possession of a specific DDT with the identification data of the exhibitor of interest. As soon as unloading is complete, each vehicle must be removed from the exhibition center. The driver who must wait for the end of the unloading/loading operations must remain available in the immediate vicinity of the vehicle in a safe assigned place and cannot go to other areas unless expressly authorized. If you need to access the toilets, you must use the special passages dedicated to pedestrians, paying maximum attention to any crossings of transit routes of the vehicles.

11. Use of vehicles and equipment

It is forbidden to carry out unauthorized interventions on the vehicles, equipment and systems owned by Centro Fiera S.p.A., unless this is necessary to deal with dangerous or emergency situations. In this case, the user must im-



mediately inform the company of the intervention carried out.

Before starting any activity, report to the person in charge or to the contact person of the place where the installation and/or maintenance work is to be carried out, mutually agreeing on the methods of carrying out the work, with regard to: safety, methods of connection to electricity, protection and isolation of the workplace, methods envisaged in the event of an emergency and evacuation plan, analysis of particular accident prevention and health ri-

sks present (noise, harmful products, fire and/or explosion hazards, hazards arising from existing systems and machinery).

Equipment and/or machines owned by others may not be used without first having received the relevant authorization and having verified their efficiency with regard to safety. For all equipment, machinery and PPE used by the user, a copy of the certification of compliance with accident prevention regulations must be available.

11. Risk of falling from a height. EQUIPMENT FOR WORKING AT HEIGHT

The following may be used: scaffolding, scaffolding, self-lifting platforms or other equipment that guarantees similar safety against falling. The ladder may be used for small interventions that do not require the use of a horizontal force or movements that may put the worker in a precarious state of balance. The contractor must ensure that suitable protection systems against falling at height are used. The personnel employed must be trained and instructed in

RISKS PRESENT DURING TRADE FAIRS

PHASE	RISKS	PREVENTION AND PROTECTION MEASURES
Use of the equipment	Collapses	Carry out frequent checks on the stands to verify the absence of damage and the good condition of the fixings of the vertical and horizontal structures. It is forbidden to make changes to the stands and to overload them improperly.
Activities in the presence of the public	Risks of interference with the public	Delimit the areas of the activity. It is forbidden to operate with vehicles. Take every precaution to avoid the emission of dust, noise, harmful substances. Have suitable fire-fighting equipment.
Emergency	Impossibility of escape routes. Disorganization in emergency management	Check the usability of the exit routes and that the doors are not locked. Check the availability of suitable signage and emergency lighting.
Systems	Explosions, fire, explosion, electrocution	Arrange the declaration of conformity of the systems. It is forbidden to make changes. Check them frequently during the entire exhibition activity.

accordance with current regulations.

The user undertakes to operate without altering in any way the characteristics and levels of safety and protection of the workplace, as well as of the machines, equipment and systems. He also undertakes to promptly report to the company manager any emergency situations and/or anomalies that may arise during the execution of the works.

The user also undertakes to inform his staff and that of any third-party companies present during the period of use of the exhibition spaces and structures, both of the specific risks and of the prevention and emergency measures connected with the execution of the works and to scrupulously comply with the safety regulations as detailed in the specific section "SAFETY REGULATIONS".

The user undertakes, for itself and for any third-party companies subcontracted, to respect and train workers on the risks and prevention and protection measures concerning workplace safety of the activities to be performed.

The user and any third-party companies undertake to carry out the works and services exclusively by means of regularly employed personnel and to scrupulously observe all applicable legal provisions.

In particular, by way of example, the user and any third-party companies subcontracted undertake to:

- pay personnel a salary no less than that established by the collective bargaining rules in force for the category to which they belong, except for the mandatory minimum salary and regulatory treatment established by art. 3 paragraph 1 of Law 23.10.1960 n. 1369;

- provide, under their own responsibility, insurance relating to accidents at work, sickness assistance and Social Security.

The user shall ensure, under his own responsibility, that each worker, including workers of any third-party companies subcontracted, is always in a position to be compensated by INAIL in the event of an accident or occupational disease.

IDENTIFICATION CARD

Pursuant to art. 18, paragraph 1, letter u), of Legislative Decree no. 81 of 9 April 2008, all workers must carry an identification card, provided by the employer, with a photo, personal details and name of the company they work for, reporting:

- for the company: the exact and complete company name or denomination, the address of the registered office, tax code and VAT number;
- for the employee: name, surname, date and place of birth, date of hiring.

DESCRIPTION OF ACTIVITIES

Use of exhibition spaces - Pavilions 1, 2, 3, 4, 5, 6, 7, 7 bis, 8 and external areas

For assembly purposes, the trade-fair premises are available on Tuesday September 30th, from 2.00 pm to 8.00 pm, Wednesday October 1st and Thursday October 2nd from 8.00 am to 8.00 pm unless otherwise provided due to force majeure. The disassembly operations are permitted on Sunday, October 6th from 5.30 pm and 9.00 pm and Monday, October 7th from 8.00 am to 6.00 pm.

INFORMATION ON THE INTERFERING RISKS PRESENT DURING THE SET-UP OPERATIONS AND EXHIBITION AND THE RELATED PREVENTIVE AND PROTECTIVE MEASURES TO BE ADOPTED.

The person in charge will not enter the exhibition center and/or come into contact with the client's vehicles and equipment without prior authorization from the person in charge. In any case, any possible contact with the equipment and vehicles used will be prohibited. Interference must be avoided and prevented by delimiting the work area with trestles, chains and the installation of suitable signage.

No activities must be carried out that overlap with those of other subcontractors or client personnel. The movement of vehicles and trolleys in the work area must be prevented.

The user undertakes to coordinate with Centro

Fiera S.p.A., adopting the measures required to avoid any interference. In the event of a problem of interference or lack of coordination, the user must temporarily suspend the activity and request the intervention of Centro Fiera to resolve the problem.

The user undertakes to cooperate with the employers of the executing companies, in the implementation of measures for the prevention and protection of risks at work, accidents during work activity; to coordinate the prevention and protection interventions from the risks to which workers are exposed, informing each other also in order to eliminate the risks of interference between the works of the different companies involved.

It is forbidden to occupy the areas outside your stand with your own work. It is necessary to always guarantee an escape route. The work of each person must not constitute a danger for the other workers.

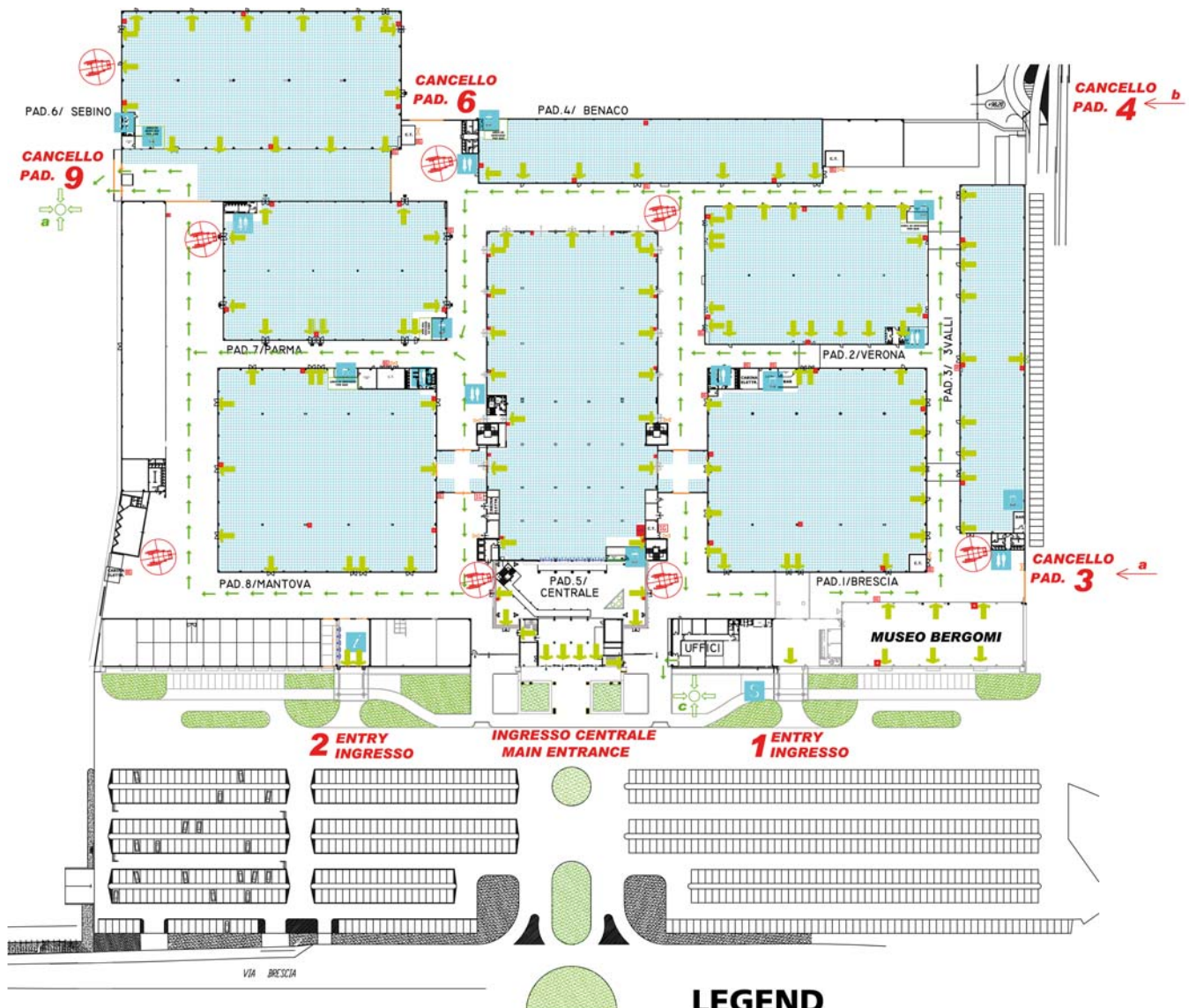
Other measures envisaged: spatial segregation of the assigned work area, prohibition of moving from the assigned work areas, use of different working hours compared to other interfering activities to be agreed with the Centro Fiera staff.

In order to meet all the safety requirements, the client bears considerable costs. In order to avoid the risks of interference typical of the installation, use of the exhibition spaces and dismantling activities, the following are envisaged: costs for disposable preparations (white-red plastic tape); costs for amortizable preparations (4 danger signs for work in progress, 4 no-entry signs, 2 portable fire extinguishers); costs for labor (positioning and mobilization of preparations in the absence of interference); costs for coordination and information of workers (coordination meetings).

The calculation of safety costs to avoid interference is based on the outcome of a significant sample of works/services similar to those covered by the intervention, for which it is expected that safety costs will be equal to 1.2% of the total of the overall contract.

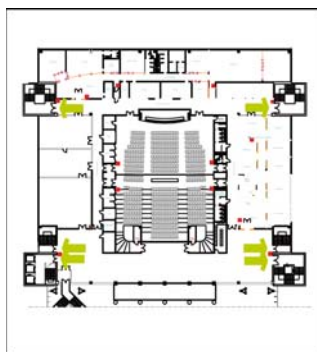


EMERGENCY PLAN FOR CENTRO FIERA MONTICHIARI (BS)



LEGEND

SYMBOL	DESCRIPTION
	ESCAPE
	SAFE PLACES FOR THE DISABLED
	MAIN ENTRANCE FOR RESCUERS
	SECONDARY ENTRANCE
	HALLS COLLECTION POINT
	AGRICULTURAL SERVICE CENTER COLLECTION POINT
	OFFICE COLLECTION POINT
	WC
	BAR
	CONGRESS ROOM
	BANK
	RELEASE BUTTON OF THE ELECTRICAL ENERGY
	FIRE ALARM BUTTON
	METHANE VALVE



1° FLOOR - ENTRANCE AREA
SCALVINI CONFERENCE ROOM

Date

Stamp and legible signature (EXHIBITOR)

